



# PARTNERSHIP FORUM

Closing the Gap in Real-World Evidence Use:  
A Collaborative Approach for Health Care  
Transformation

**NOVEMBER 12-13, 2024 | OLD TOWN ALEXANDRIA, VA**





This AMCP Partnership Forum led by the AMCP Research Institute will convene multi-stakeholder experts to develop resources that will address barriers to RWE use in formulary decision-making through workshop and collaborative activities that will result in a set of RWE standards and tools to facilitate stakeholder communication and streamline the use of RWE.



## WELCOME

On behalf of AMCP, I wanted to thank you for participating in this partnership forum that will focus on the opportunities and challenges posed by real-world evidence (RWE) use. We choose the topics of our Partnership Forums with intention—with the goal of addressing an important issue where dialogue can have a constructive impact on our field and on behalf of those we serve.

This year's Partnership Forum, entitled "Closing the Gap in Real-World Evidence Use: A Collaborative Approach for Health Care Transformation," is firmly in line with this aim. For years, many of us at AMCP and within larger managed care pharmacy have heard about the need to improve how RWE is utilized—how our industry can embrace and incorporate sound evidence from a wide range of source beyond clinical data. Finding ways to do so is essential for all sectors within our industry—payers, pharmaceutical manufacturers, and countless other stakeholders within our health care system.

But the opportunity is great, particularly because of the positive effect that RWE can have on behalf of patients. RWE is increasingly used to support a range of studies, but it could have a much more prominent role in payer decision-making. Today's Partnership Forum is a key step in moving the industry toward a point where RWE is more readily utilized and deployed so that it can have a positive and tangible effect for patients.

Over the years, we at AMCP have emphasized the importance of our Partnership Forums because we have seen their tangible impact on a wide range of issues. By coming together today and talking in person, we can reach a common understanding that will facilitate alignment, transparency, and consistency regarding RWE.

As always, thank you to our sponsors Abbvie, AstraZeneca, Gilead, IQVIA, Jazz Pharmaceuticals, Johnson & Johnson, Leo Pharma, Lilly, Merck, Pfizer, PhRMA, Sanofi, and Takeda. This AMCP Partnership Forum would not be possible without your support.

Following the Forum, AMCP will produce a document describing our findings and recommendations in an upcoming issue of AMCP's *Journal of Managed Care + Specialty Pharmacy*. This will be widely disseminated to decision makers around the country to help feed into future constructive discussions.

Overall, thank you for taking the time to join this partnership forum on RWE. Your insights and expertise will go a long way in enhancing the practice of managed care pharmacy and, in doing so, bettering health care in this country.

A handwritten signature in black ink, appearing to read "Susan Cantrell".

**Susan Cantrell, MHL, RPh, CAE**  
Chief Executive Officer, AMCP





## MODERATORS



**Elizabeth Powers**

Vice President and General Manager, Real World Strategy  
and Innovation  
IQVIA

[LinkedIn](#)



**Cate Lockhart, PharmD, PhD**

Chief Science Officer  
AMCP

Executive Director  
BBCIC

[LinkedIn](#)





# AGENDA

## TUESDAY, NOVEMBER 12

**1-1:50pm:** Welcome and Introductions

**1:50-3pm:** Workshop #1 – Refining the Framework

**3-3:15pm:** Break

**3:15-4:45pm:** Workshop #2 – Refining the Criteria

**4:45-5pm:** Break

**5-5:30pm:** Day 1 Wrap-Up and Close

**5:30pm:** Reception

## WEDNESDAY, NOVEMBER 13

**7-8am:** Breakfast

**8-8:15am:** Welcome and Day 1 Debrief

**8:15-10am:** Workshop #3 – Case Studies for RWE Assessment

**10-10:20am:** Break

**10:20-12pm:** Workshop #4 – Case Studies for Presenting RWE

**12-1pm:** Networking Lunch

**1-1:15pm:** Morning Wrap-Up

**1:15-2:15pm:** Workshop #5 – Framework and Criteria Consensus

**2:15-2:35pm:** Break

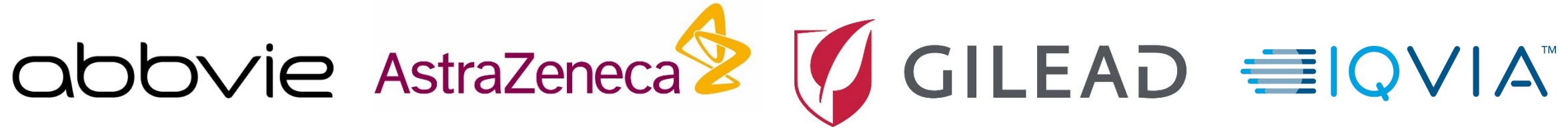
**2:35-3pm:** Looking Ahead & Feedback

**3-3:45pm:** Forum Summary and Conclusions





HOSTED BY AMCP IN PARTNERSHIP WITH



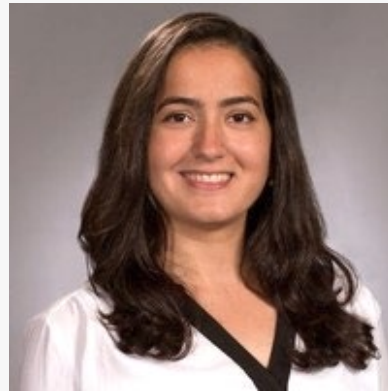


## PARTICIPANTS

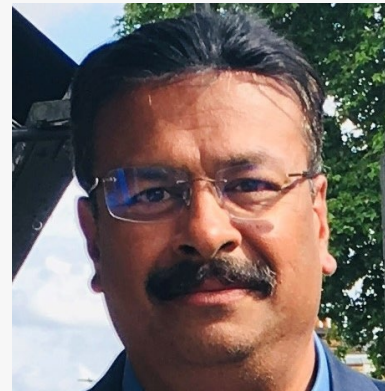


**Patrick Arena, PhD**  
Director, Science  
Aetion, Inc.

Connect on [LinkedIn](#)



**Marie Badlissi**  
Director, Population  
Health  
Sanofi



**Sanjeev Balu, PhD**  
Head, US HEOR/RWE  
LEO Pharma

Connect on [LinkedIn](#)



**Murtuza Bharmal,  
BPharm, MS, PhD**  
Head, Oncology  
Outcomes Research  
AstraZeneca

Connect on [LinkedIn](#)





## PARTICIPANTS



**Diana Brixner, BPharm,  
PhD, FAMCP**

Professor Emeritus  
University of Utah

Connect on [Linked in](#)



**Zachary Contreras,  
PharmD**

Director, Pharmacy  
Benefits  
Sharp Health Plan

Connect on [Linked in](#)



**Joseph Couto, PharmD,  
MBA**

Executive Director  
CVS Health

Connect on [Linked in](#)



**Stacey DaCosta Byfield**

VP, Research  
Optum

Connect on [Linked in](#)







## PARTICIPANTS



**Nancy Dreyer**

CEO  
Dreyer Strategies LLC

Connect on [Linked in](#)



**Carolyn Ha, PharmD**

Deputy Vice President,  
Policy & Research  
PhRMA



**Rachele Hendricks-  
Sturup, DHSc, MSc, MA**

Research Director, Real-  
World Evidence  
Duke-Margolis Center for  
Health Policy

Connect on [Linked in](#)



**Kassie Herbst, PharmD**

Director, Formulary  
Strategy & Operations  
nirvanaHealth

Connect on [Linked in](#)





## PARTICIPANTS



**Katie Herren, PharmD,  
MS**

Senior Director - Health  
Outcomes and Medical  
Engagement  
Eli Lilly and Company

Connect on [Linked in](#)



**Adam Hoye-Simek,  
PharmD**

Senior Pharmacy  
Manager of Utilization  
Management  
Devoted Health

Connect on [Linked in](#)



**Sophia Humphreys,  
PharmD, MHA, BCBBS**

Director, Formulary  
Management and Clinical  
Programs  
Sutter Health

Connect on [Linked in](#)



**Jasmina Ivanova**

Senior Director, US  
HV&E, Oncology  
Pfizer





## PARTICIPANTS



**Nedra Joseph, PhD**  
Director, Scientific Affairs  
Johnson and Johnson



**Troy Koch, PharmD,  
MBA**  
Director, Value Access  
Insights and Solutions  
Takeda Pharmaceuticals



**Dominik Lautsch**  
Outcomes Research.  
Head, Pulmonary  
Hypertension.  
Merck & Co., Inc.



**Matt Mitchell,  
PharmD, MBA**  
AVP Pharmacy  
Select Health/Scripus





## PARTICIPANTS



**Manish Mittal, PhD**  
US Pan-Immunology  
Strategy Lead  
AbbVie



**Lynn Nishida, RPh,  
FAMCP**  
Sr Vice President, Clinical  
Strategy  
PayerAlly



**Lisa Okazaki**  
Consultant  
IQVIA

Connect on [LinkedIn](#)





## PARTICIPANTS



**Hiva Pourarsalan,  
PharmD**

Director of Pharmacy  
Aetna



**Carla Rodriguez-  
Watson, PhD, MPH**

Director of Research  
Reagan-Udall Foundation  
for the FDA



**Ann Schuster, PharmD,  
FAMCP**

Sr Dir, Clinical Pharmacy  
Programs  
Cigna Healthcare

Connect on [LinkedIn](#)





## PARTICIPANTS



**Wayne Su, MSc**  
Director, Global Value &  
HEOR  
Jazz Pharmaceuticals

Connect on [Linked in](#)



**Brian Sweet, BS Pharm,  
MBA**  
President  
Applied Health  
Outcomes, Inc.

Connect on [Linked in](#)



**Woodie Zachry, RPh,  
PhD**  
Senior Director  
Gilead

Connect on [Linked in](#)





# THANK YOU | AMCP STAFF & CONSULTANTS

**Susan A. Cantrell, RPh, CAE**

Chief Executive Officer

**Tom Casey, MPP**

Associate Director, Government Affairs

**Lauren Chan**

Manager, Projects & Development

**Ebony Clay, PMP**

Assistant Director, Programs & Development  
AMCP Foundation

**Jim Cooney**

Director, Marketing Operations + Growth

**Jennifer Evans, PharmD, BCACP**

Director, Educational Programs/Grants

**Julian Greer, CMP, PMP**

Senior Manager, Meetings & Forums

**Evonne Jackson**

Senior Manager, Executive Office

**Mason Johnson**

Manager of Professional Affairs

**Vicky Jucelin**

Manager of Regulatory Affairs

**Steve Kheloussi, PharmD, MBA, FAMCP**

Director, Professional Affairs

**Erica Klinger**

VP Marketing





# THANK YOU | AMCP STAFF & CONSULTANTS

**Nakayalla Langley**

APPE Pharmacy Student

**Cate Lockhart, PharmD, PhD**

Chief Science Officer

**Matthew Lowe, MSHCA**

Chief Business Officer

**Julia Marsh**

Director, Projects & Operations

**Noreen Matthews**

Senior Director, Business Strategies

**Lisa Okazaki**

Consultant

**Iulia Opran, PharmD, MSc**

Executive Fellow

**Pam Pawloski, PharmD**

Principal Research Scientist

**Elizabeth Powers**

VP & GM, Regulatory Science and Study Innovation

**Ruby Singh, PharmD, CAE**

Senior Vice President, Education and Publications

**Tyler Thorne**

Manager, Government Affairs

**Mitzi Wasik, PharmD, MBA, BCPS, FMCP, FCCP**

Executive Director  
AMCP Foundation





## **THANK YOU**

To our distinguished participants and guests.



## **ABOUT AMCP**

AMCP is the professional association leading the way to help patients get the medications they need at a cost they can afford. AMCP's diverse membership of pharmacists, physicians, nurses, and professionals in life sciences and biopharmaceutical companies leverage their specialized expertise in clinical evidence and economics to optimize medication benefit design and population health management, and help patients access cost-effective and safe medications and other therapies. AMCP members improve the lives of nearly 300 million Americans served by private and public health plans, pharmacy benefit management firms, and emerging care models.

## **AMCP MISSION**

To improve patient health by ensuring access to high-quality, cost-effective medications and other therapies.



AMCP | Academy of Managed Care Pharmacy  
675 N Washington Street | Suite 220 Alexandria, VA 22314  
703 684 2600 | [amcp.org](http://amcp.org) | [@amcporg](https://twitter.com/amcporg) | [amcp.org/research-institute](http://amcp.org/research-institute)

Findings and recommendations from this event will be published in an upcoming issue of AMCP's *Journal of Managed Care + Specialty Pharmacy* and will be widely disseminated to decision makers around the country.

