



PARTNERSHIP FORUM

Closing the Gap in Real-World Evidence Use:
A Collaborative Approach for Health Care
Transformation

NOVEMBER 12-13, 2024 | OLD TOWN ALEXANDRIA, VA





This AMCP Partnership Forum led by the AMCP Research Institute will convene multi-stakeholder experts to develop resources that will address barriers to RWE use in formulary decision-making through workshop and collaborative activities that will result in a set of RWE standards and tools to facilitate stakeholder communication and streamline the use of RWE.



WELCOME

On behalf of AMCP, I wanted to thank you for participating in this partnership forum that will focus on the opportunities and challenges posed by real-world evidence (RWE) use. We choose the topics of our Partnership Forums with intention—with the goal of addressing an important issue where dialogue can have a constructive impact on our field and on behalf of those we serve.

This year's Partnership Forum, entitled "Closing the Gap in Real-World Evidence Use: A Collaborative Approach for Health Care Transformation," is firmly in line with this aim. For years, many of us at AMCP and within larger managed care pharmacy have heard about the need to improve how RWE is utilized—how our industry can embrace and incorporate sound evidence from a wide range of source beyond clinical data. Finding ways to do so is essential for all sectors within our industry—payers, pharmaceutical manufacturers, and countless other stakeholders within our health care system.

But the opportunity is great, particularly because of the positive effect that RWE can have on behalf of patients. RWE is increasingly used to support a range of studies, but it could have a much more prominent role in payer decision-making. Today's Partnership Forum is a key step in moving the industry toward a point where RWE is more readily utilized and deployed so that it can have a positive and tangible effect for patients.

Over the years, we at AMCP have emphasized the importance of our Partnership Forums because we have seen their tangible impact on a wide range of issues. By coming together today and talking in person, we can reach a common understanding that will facilitate alignment, transparency, and consistency regarding RWE.

As always, thank you to our sponsors Abbvie, AstraZeneca, Gilead, IQVIA, Jazz Pharmaceuticals, Johnson & Johnson, Leo Pharma, Lilly, Merck, Pfizer, PhRMA, and Takeda. This AMCP Partnership Forum would not be possible without your support.

Following the Forum, AMCP will produce a document describing our findings and recommendations in an upcoming issue of AMCP's *Journal of Managed Care + Specialty Pharmacy*. This will be widely disseminated to decision makers around the country to help feed into future constructive discussions.

Overall, thank you for taking the time to join this partnership forum on RWE. Your insights and expertise will go a long way in enhancing the practice of managed care pharmacy and, in doing so, bettering health care in this country.

A handwritten signature in black ink, appearing to read "Susan Cantrell".

Susan Cantrell, MHL, RPh, CAE
Chief Executive Officer, AMCP





MODERATORS



Elizabeth Powers

Vice President and General Manager, Real World Strategy
and Innovation
IQVIA

[LinkedIn](#)



Cate Lockhart, PharmD, PhD

Chief Science Officer
AMCP

Executive Director
BBCIC

[LinkedIn](#)





AGENDA

TUESDAY, NOVEMBER 12

1-1:50pm: Welcome and Introductions

1:50-3pm: Workshop #1 – Refining the Framework

3-3:15pm: Break

3:15-4:45pm: Workshop #2 – Refining the Criteria

4:45-5pm: Break

5-5:30pm: Day 1 Wrap-Up and Close

5:30pm: Reception

WEDNESDAY, NOVEMBER 13

7-8am: Breakfast

8-8:15am: Welcome and Day 1 Debrief

8:15-10am: Workshop #3 – Case Studies for RWE Assessment

10-10:20am: Break

10:20-12pm: Workshop #4 – Case Studies for Presenting RWE

12-1pm: Networking Lunch

1-1:15pm: Morning Wrap-Up

1:15-2:15pm: Workshop #5 – Framework and Criteria Consensus

2:15-2:35pm: Break

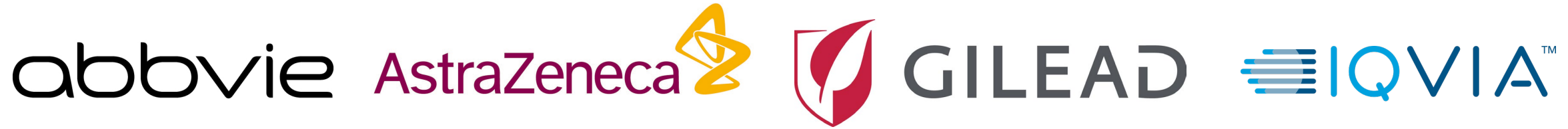
2:35-3pm: Looking Ahead & Feedback

3-3:45pm: Forum Summary and Conclusions





HOSTED BY AMCP IN PARTNERSHIP WITH



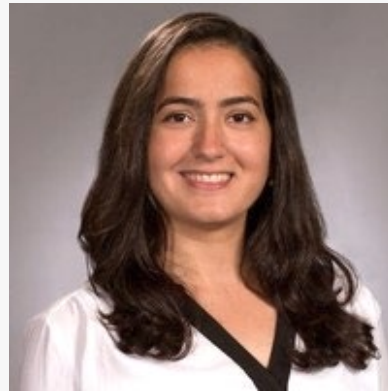


PARTICIPANTS

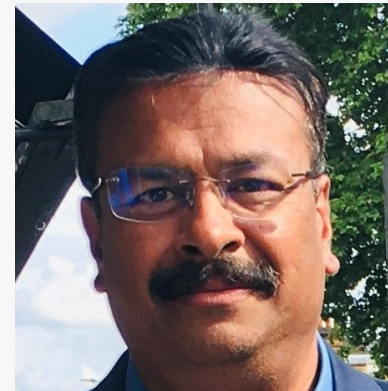


Patrick Arena, PhD
Director, Science
Aetion, Inc.

Connect on [LinkedIn](#)



Marie Badlissi
Director, Population
Health
Sanofi



Sanjeev Balu, PhD
Head, US HEOR/RWE
LEO Pharma

Connect on [LinkedIn](#)



**Murtuza Bharmal,
BPharm, MS, PhD**
Head, Oncology
Outcomes Research
AstraZeneca

Connect on [LinkedIn](#)





PARTICIPANTS



**Diana Brixner, BPharm,
PhD, FAMCP**

Professor Emeritus
University of Utah

Connect on [Linked in](#)



**Zachary Contreras,
PharmD**

Director, Pharmacy
Benefits
Sharp Health Plan

Connect on [Linked in](#)



**Joseph Couto, PharmD,
MBA**

Executive Director
CVS Health

Connect on [Linked in](#)



Stacey DaCosta Byfield

VP, Research
Optum

Connect on [Linked in](#)





PARTICIPANTS



Nancy Dreyer

CEO
Dreyer Strategies LLC

Connect on [Linked in](#)



Carolyn Ha, PharmD

Deputy Vice President,
Policy & Research
PhRMA



**Rachele Hendricks-
Sturup, DHSc, MSc, MA**

Research Director, Real-
World Evidence
Duke-Margolis Center for
Health Policy

Connect on [Linked in](#)



Kassie Herbst, PharmD

Director, Formulary
Strategy & Operations
nirvanaHealth

Connect on [Linked in](#)





PARTICIPANTS



**Katie Herren, PharmD,
MS**

Senior Director - Health
Outcomes and Medical
Engagement
Eli Lilly and Company

Connect on [Linked in](#)



**Adam Hoye-Simek,
PharmD**

Senior Pharmacy
Manager of Utilization
Management
Devoted Health

Connect on [Linked in](#)



**Sophia Humphreys,
PharmD, MHA, BCBBS**

Director, Formulary
Management and Clinical
Programs
Sutter Health

Connect on [Linked in](#)



Jasmina Ivanova

Senior Director, US
HV&E, Oncology
Pfizer





PARTICIPANTS



Nedra Joseph, PhD
Director, Scientific Affairs
Johnson and Johnson



**Troy Koch, PharmD,
MBA**
Director, Value Access
Insights and Solutions
Takeda Pharmaceuticals



Dominik Lautsch
Outcomes Research.
Head, Pulmonary
Hypertension.
Merck & Co., Inc.



**Matt Mitchell,
PharmD, MBA**
AVP Pharmacy
Select Health/Scripius





PARTICIPANTS



Manish Mittal, PhD
US Pan-Immunology
Strategy Lead
AbbVie



**Lynn Nishida, RPh,
FAMCP**
Sr Vice President, Clinical
Strategy
PayerAlly



Lisa Okazaki
Consultant
IQVIA

Connect on [Linked in](#)





PARTICIPANTS



**Hiva Pourarsalan,
PharmD**

Director of Pharmacy
Aetna



**Carla Rodriguez-
Watson, PhD, MPH**

Director of Research
Reagan-Udall Foundation
for the FDA



**Ann Schuster, PharmD,
FAMCP**

Sr Dir, Clinical Pharmacy
Programs
Cigna Healthcare

Connect on [LinkedIn](#)





PARTICIPANTS



Wayne Su, MSc
Director, Global Value &
HEOR
Jazz Pharmaceuticals

Connect on [Linked in](#)



**Brian Sweet, BS Pharm,
MBA**
President
Applied Health
Outcomes, Inc.

Connect on [Linked in](#)



**Woodie Zachry, RPh,
PhD**
Senior Director
Gilead

Connect on [Linked in](#)





THANK YOU | AMCP STAFF & CONSULTANTS

Susan A. Cantrell, RPh, CAE

Chief Executive Officer

Tom Casey, MPP

Associate Director, Government Affairs

Lauren Chan

Manager, Projects & Development

Ebony Clay, PMP

Assistant Director, Programs & Development
AMCP Foundation

Jim Cooney

Director, Marketing Operations + Growth

Jennifer Evans, PharmD, BCACP

Director, Educational Programs/Grants

Julian Greer, CMP, PMP

Senior Manager, Meetings & Forums

Evonne Jackson

Senior Manager, Executive Office

Mason Johnson

Manager of Professional Affairs

Vicky Jucelin

Manager of Regulatory Affairs

Steve Kheloussi, PharmD, MBA, FAMCP

Director, Professional Affairs

Erica Klinger

VP Marketing





THANK YOU | AMCP STAFF & CONSULTANTS

Nakayalla Langley

APPE Pharmacy Student

Cate Lockhart, PharmD, PhD

Chief Science Officer

Matthew Lowe, MSHCA

Chief Business Officer

Julia Marsh

Director, Projects & Operations

Noreen Matthews

Senior Director, Business Strategies

Lisa Okazaki

Consultant

Iulia Opran, PharmD, MSc

Executive Fellow

Pam Pawloski, PharmD

Principal Research Scientist

Elizabeth Powers

VP & GM, Regulatory Science and Study Innovation

Ruby Singh, PharmD, CAE

Senior Vice President, Education and Publications

Tyler Thorne

Manager, Government Affairs

Mitzi Wasik, PharmD, MBA, BCPS, FMCP, FCCP

Executive Director
AMCP Foundation



THANK YOU

To our distinguished participants and guests.



ABOUT AMCP

AMCP is the professional association leading the way to help patients get the medications they need at a cost they can afford. AMCP's diverse membership of pharmacists, physicians, nurses, and professionals in life sciences and biopharmaceutical companies leverage their specialized expertise in clinical evidence and economics to optimize medication benefit design and population health management, and help patients access cost-effective and safe medications and other therapies. AMCP members improve the lives of nearly 300 million Americans served by private and public health plans, pharmacy benefit management firms, and emerging care models.

AMCP MISSION

To improve patient health by ensuring access to high-quality, cost-effective medications and other therapies.



AMCP | Academy of Managed Care Pharmacy
675 N Washington Street | Suite 220 Alexandria, VA 22314
703 684 2600 | amcp.org | [@amcporg](https://www.instagram.com/amcporg) | amcp.org/research-institute

Findings and recommendations from this event will be published in an upcoming issue of AMCP's *Journal of Managed Care + Specialty Pharmacy* and will be widely disseminated to decision makers around the country.

