

OUR INTELLIGENCE ISN'T ARTIFICIAL



AMCP RESEARCH INSTITUTE (ARI) is not just an expansion of BBCIC; it's a reimagining. It's about broadening our research horizons to encompass all facets of managed care pharmacy – from cost analyses to policy support, clinical care and beyond.

WHERE WE STARTED



BBCIC Mission: To generate reliable real-world evidence that examines the safety and effectiveness of biologics in order to improve public health.

PAST/FUTURE RESEARCH PROJECTS



COMPLETED PROJECTS TO DATE

UTILIZATION ANALYSES Insulins (3) G-CSF (2) Anti-Inflammatories (1) Bevacizumab (1) Trastuzumab (2)	METHODS/INFRASTRUCTURE Switching Study Designs ICD-9 to ICD-10 Mapping NDC and J-Codes in Medical Claims Comparative Effectiveness Research Methods
DESCRIPTIVE ANALYSES Erythropoietin Stimulating Agents G-CSFs Insulins Anti-Inflammatories Switching (rheumatoid arthritis)	COMPARATIVE SAFETY/EFFECTIVENESS G-CSF (filgrastims and pegfilgrastims)

ACTIVE FEDERAL GRANTS!

\$1,311,368

\$1,452,600

Improving the Efficiency of Regulatory Decisions for Biosimilar and Interchangeable Biosimilars by Leveraging Real-World Data

Bridging the Gap: Using Foreign Real-World Data to Inform Interchangeable Biosimilar Approvals

WHERE WE ARE NOW

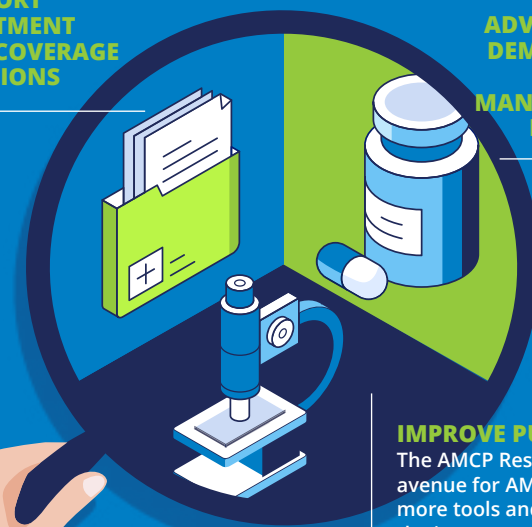
LEVERAGING THE POWER OF AMCP

AMCP members improve the lives of nearly 300 million Americans served by health plans, pharmacy benefit management firms and emerging care models.

SUPPORT TREATMENT AND COVERAGE DECISIONS

ADVANCE AND DEMONSTRATE VALUE OF MANAGED CARE PHARMACY

IMPROVE PUBLIC HEALTH
 The AMCP Research Institute is an avenue for AMCP to create even more tools and resources to support the important work of our members.



WHERE WE ARE GOING

LOOKING AHEAD IN 2024

NEW AND ONGOING PROJECTS

The Effect of the Covid-19 Pandemic on non-Covid Related Treatment and Outcomes in Inflammatory Bowel Disease

Adherence - Algorithms, Methods, and Best Practices using Claims Data

Biosimilar Access and Utilization

Anti-VEGF (oncology/ ophthalmology) and Bone Antiresorptive Therapy Landscape Assessment

- 7** MANUSCRIPTS IN PREPARATION
- 5** MANUSCRIPTS PLANNED
- 4** ABSTRACTS SUBMITTED FOR 2024 CONFERENCES
- 5+** ABSTRACTS PLANNED

WHY ARI?



CONNECT WITH US
 Discover the future of managed care pharmacy with the AMCP Research Institute. Connect with us to see how we can work together. Visit us online to learn more and get involved today.



Join us in this exciting journey. Let's unlock new possibilities, empower AMCP members, and shape the future of managed care pharmacy together. Follow [#AMCPResearch](#) or visit [AMCP.org/Research-Institute](#)

2024